



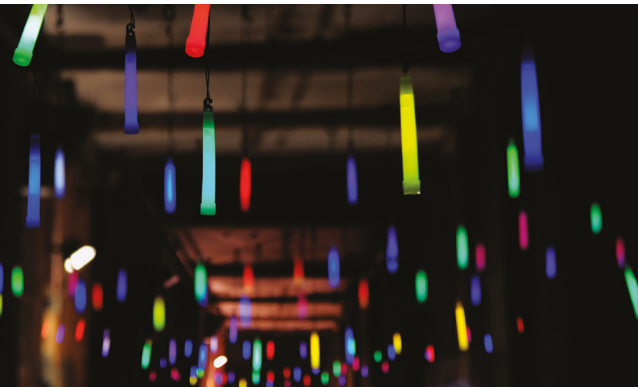
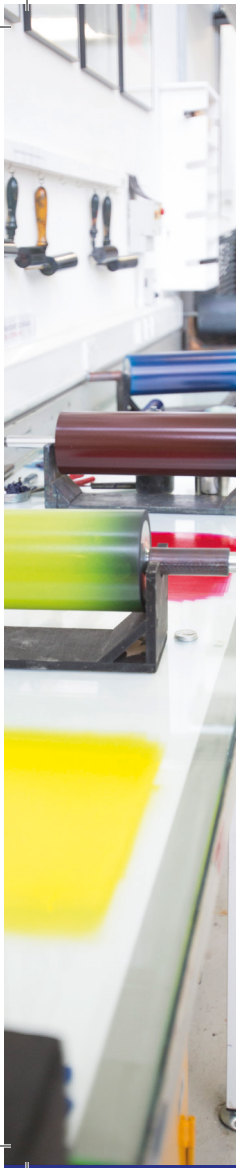
Rose Bruford College
Community & Outreach of Theatre & Performance

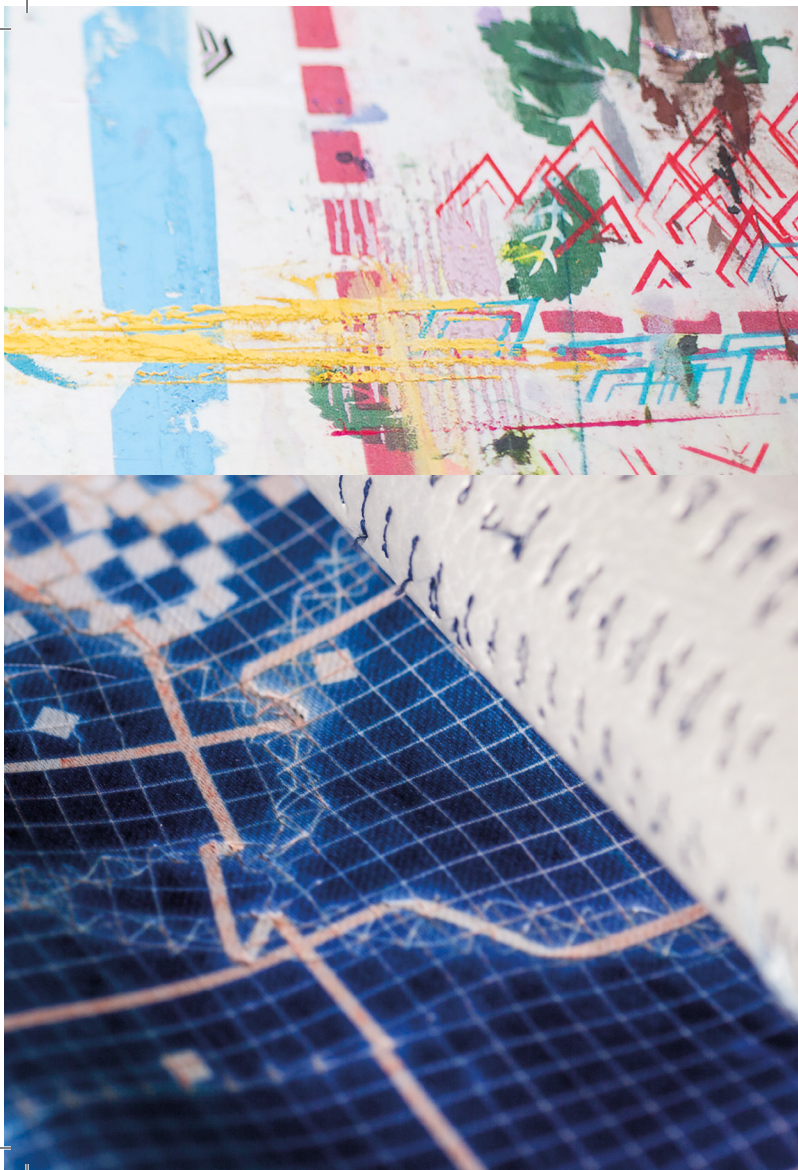
ual:

ROYAL CENTRAL
SCHOOL OF SPEECH & DRAMA
— UNIVERSITY OF LONDON

The background of the entire page is a close-up photograph of a green fabric. The fabric has a complex pattern of raised, blue, wavy lines that resemble stylized hair or roots. Interspersed among these are small, orange, teardrop-shaped patterns. The lighting is soft, highlighting the texture of the fabric.

NATIONAL WORKSHOPS FOR CREATIVE TEACHERS 2019





We are delighted to invite creative teachers from across the UK to take part in an exciting programme of free workshops. National Workshops for Creative Teachers is now in its third year and we are looking forward to welcoming teachers a new and extended programme.

As members of a creative educational network we welcome the opportunity to work closer to teachers; to support their own creative practice and to work together to create strategies in response to a changing curriculum, together with the challenges facing creative education.

These practical workshops are designed to be informal and relaxing; to inspire new ways of working and refresh skills to take back to the classroom. Each workshop is located at a different part of the country and offers a specialist area that plays to the niche expertise of each individual institution.

We hope you enjoy browsing through the programme for more details on each workshop.

PERSPECTIVE MASTERCLASS WITH WILL TEATHER

Norwich University of the Arts,

Francis House, 3-7 Redwell St, Norwich NR2 4SN

Wednesday 29 May, 1.30-5.00pm

Join artist-in-Residence for Norwich Arts Centre, Will Teather, for a Teacher CPD session as he introduces a range of techniques for depicting depth and space within a drawing.

Learn new skills to take back to the classroom as he explores all major methods of depicting space used with realism including 1, 2 and 3 point perspective, axonometric perspective, perspective from real life and finally a 360 drawing of a space.

The workshop will begin with a visit to one of the artist's hand painted spheres, currently installed within the city, that use a unique form of perspective to depict 360 panoramas of interiors. Following this visitors will experiment with perspective drawing at various locations, including NUA Munning's Drawing Studio. All materials provided.

About the artist

Will Teather's paintings have been exhibited internationally to acclaim, with recent exhibitions including a solo exhibition at the Underdog Gallery, London Bridge, Artwars at Red Dot Miami and as a finalist in the London Contemporary Art Prize. He was the British Representative for the Malonny Art Forum, Lithuania in 2018 and guest artist for Artrooms London, 2017. He is the Artist-in-Residence for Norwich Arts Centre, following on from previous residencies with venues in New York and Aberdeen.

To book your place please visit:

nua.ac.uk/events/all/perspective-masterclass-teachers

TEXTILES AND SURFACE PATTERN DESIGN WORKSHOP

Leeds Arts University,

Blenheim Walk, Leeds, LS2 9AQ

Tuesday 11th June, 5.00 - 7.30pm

Tuesday 22nd October, 5.00 - 7.30pm

Join Leeds Arts University Lecturers for this free CPD for Teachers workshop. (The June date coincides with the undergraduates exhibitions at Blenheim Walk).

You will explore a variety of print and surface pattern techniques for paper and textiles in the University's Printroom, as well as being introduced to course studios and workshops.

This is a great opportunity for you to gain a range of creative approaches, visual research and practical skills to inspire and innovate your students' work and enhance their portfolios.

Booking is essential. Please email progression@leeds-art.ac.uk

Please state your name, your role, School/College and any access or dietary requirements.

To find us please visit: <http://www.leeds-art.ac.uk/about-us/find-us/>

TEACHERS' SESSION — ANARCHY IN THE CLASSROOM

Ravensbourne Greenwich Peninsula,
6 Penrose Way, London SE10 0EW,

Thursday 17 June 10.00am – 3.00pm

Teachers are invited to join designer and visual artist Soofiya for this session exploring ideas around gender and identity within the art school and pedagogy. This session will be packed with practical activities and ideas aiming to ignite dissent and anarchy to our concepts of gender and identity.

To book your place please visit:
eventbrite.co.uk/e/teachers-cpd-anarchy-in-the-classroom-tickets-58579050517

TEXTILES EMBROIDERY

London College of Fashion,
40 Lime Grove, London, W12 8EA

Thursday 11 July, 10.00am – 4.30pm
Maximum places available: 20

Join LCF Textiles staff to explore our well-equipped embroidery studios and create exciting samples using a wide range of specialist machinery. We aim to support you to find ways to investigate surface pattern and texture with younger students in the classroom.

Drawing skills are a key tool for investigating and communicating and younger students can foster this early by regular practice. We will consider ways to do this together. We are absolutely passionate about textiles, please join us and help us inspire future generations to this wonderful world.

This event is for staff from partner schools and colleges only (within the network of institutions taking part).

Please use your school or college email address when booking a place.

To book your place please visit:
eventbrite.co.uk/e/textiles-embroidery-tickets-55579026364?utm_term=eventurl_text

A TIME TO PRINT AND PLAY

London College of Communication,

Elephant & Castle, London, SE1 6SB

Friday 12 July, 11.00am – 5.00pm

Maximum places available: 16

The Printmaking Workshops at LCC are making spaces and research hubs for our students and staff. From screen printing with natural dyes, to relief printing with laser cut blocks, to working with conductive and reactive inks, printmaking engages both aesthetics and function.

In this one-day workshop, experiment with inks, surfaces, presses, and a little bit of physical computing! to generate new ideas for the classroom. Rethink how print and printmaking can be used in combination with other making practices to inform art and design.

This event is for staff from partner schools and colleges only (within the network of institutions taking part).

Please use your school or college email address when booking a place.

To book your place please visit:

eventbrite.co.uk/e/a-time-to-print-and-play-tickets-55579324255

DESIGN FOR PERFORMANCE (+ TOUR OF CAMPUS)

Rose Bruford College of Theatre & Performance,

Burnt Oak Lane, Sidcup, Kent, DA15 9DF

Friday 12th July, 1.30–4pm

This session led by designer Juliet Shillingford introduces students to the world of theatre, set and costume design inspired by an extract of the famous Scottish play, Macbeth. Using the script as a source of inspiration, students will explore silhouette, texture & shape in costume design through paper manipulation and other techniques. Students will work to different constraints including time, colour and media that will encourage them to work outside their comfort zone and allow spontaneity to play a part in the design process. The activities are a form of idea generation encouraging the students to view their sketchbooks as a place to experiment and develop individual designs. The tasks can be applied to different areas of art and design practice and are aimed to be taken back into the classroom and incorporated into future work.

Information about the Designer:

Juliet Shillingford has worked extensively as a theatre designer for a number of years designing over eighty professional productions. Her work encompasses designs of varying scales and budgets from small scale rural touring for New Perspectives to large scale national tours. Her work as an educator has always gone alongside her design work teaching students of all ages from primary to degree level.

To book your place please visit:

<https://www.bruford.ac.uk/ukadia-design-for-performance/>

SUSTAINABLE PRACTICE

Central Saint Martins,

Granary Square, London, N1C 4AA

Tuesday 16 July, 10.00am – 5.00pm

Maximum places available: 15

An exploration of natural dyes, collage and manipulation of fabric, using techniques that can be used to further your own subject knowledge and also take into the classroom. You will receive a practical session using a range of sustainable low resource technology and materials in the textiles workshop at CSM. Refresh your approach to interpreting a brief and learn techniques and skills to enhance your own art practice as well as your teaching.

This event is for staff from partner schools and colleges only (within the network of institutions taking part).

Please use your school or college email address when booking a place.

To book your place please visit:

eventbrite.co.uk/e/sustainable-practice-tickets-55580475699?utm_term=eventurl_text

INTRO TO TECHNICAL DESIGN AND PRODUCTION

The Royal Central School of Speech & Drama,

Eton Avenue, Swiss Cottage, London, NW3 3HY

Tuesday 16th July, 11.00am – 3.00pm

Maximum places available: 12

Intro to Technical Design and Production: Central stands at the forefront of training and research in the Dramatic Arts, a broad range of industry organisations rank Central as the gold standard in leadership of technical and design work. This workshop is designed to give you an introduction to technical design and production, including:

- Overview of basic kit and how to use it
- Understand health and safety in a theatre space
- Lighting and sound design
- Blocking a rehearsal
- Practical- rig and plot your design
- Deliver a brief demo of your concept

To book your place please visit:

eventbrite.co.uk/e/intro-to-technical-design-and-production-tickets-54521458149?ref=estw

NEW APPROACHES TO DRAWING

Camberwell, Chelsea, and Wimbledon College of Arts,
Camberwell College of Arts 45-65 Peckham Rd, London SE5 8UF

Wednesday 17 July, 10.30am-4.30pm
Maximum places available: 30

Camberwell college is home to UAL's Fine Art Drawing BA and Fine Art Drawing MA programmes. This session will explore approaches to drawing through a combination of presentations, discussions and practical sessions with the academics who lead drawing across our colleges.

Rethink your ideas about drawing, spend some time drawing with us and take away some new approaches to making drawings that you can test out back at school.

This event is for staff from partner schools and colleges only (within the network of institutions taking part).

Please use your school or college email address when booking a place.

To book your place please visit:
eventbrite.co.uk/e/new-approaches-to-drawing-tickets-55579524855?utm_term=eventurl_text

MAKE YOUR MARK — LIFE DRAWING WORKSHOP

Arts University Bournemouth,
Fernbarrow, Wallisdown, Poole, Dorset BH12 5HH

Saturday 13 July, 11.00am – 3.30pm
Maximum places available: 20

Come and share our specialism and passion in the Arts University Bournemouth, CRAB Drawing Studio, where you will explore creative practices to support and complement your teaching. Examining and using varying drawing techniques will aim to give you increased confidence about drawing in order to enrich your practice.

Designed by the AUB alumnus and globally renowned architect, Professor Sir Peter Cook, the CRAB Drawing Studio was the first to be built in a UK art school for 100 years.

This exclusive opportunity for you to draw, express, experience our gallery, network, and discover more about our courses whilst being creative is absolutely FREE ... and includes lunch from 1300-1400!

Places are limited, so book now to avoid disappointment.

To book your place please visit:
store.aub.ac.uk/browse/extra_info.asp?compid=1&modid=1&prodid=3391



TEACHERS WHO ATTENDED LAST YEAR SAID

"Thank you so much for enabling us to attend such an amazing, fantastic day. Never mind encouraging the students to apply (which of course we will), I am completely smitten. Such talented and knowledgeable lecturers and a superb learning environment. Please pass on our gratitude to all the lecturers. Thanks once again and I hope the rest of your programmes are as successful"

"I wasn't sure what to expect from the day but I couldn't believe how much prep had been done and the lengths the tutors went to to ensure we all made a beautiful shoe. I learned so much and will certainly recommend this course and UAL to my students. The staff worked so incredibly hard all day and their love of shoe making was infectious"

"Just to say from all of us what a fabulous day we had! Ten out of ten. The team were excellent and really helped us through the process in a very calm and professional way. Please can you arrange something like this every year, I am sure it will have an affect on progression figures next year – how can it not!"

"The workshop helped with my own personal career development. It's opened up ideas to further develop with my department at school"

"I will enjoy taking back new ways of working to my students. The workshop has given me some great ideas for planning sessions. The workshop illustrates the need for students to be multi-disciplinary and to develop their creative thinking particularly when progressing to Higher Education. I feel in a stronger position to give more bespoke career and progression advice to my students"

"I feel that I've broadened my own experiences which in turn will help raise standards in the classroom"

"Can I thank you for the course which I found inspirational for a recent convert to the practices of ceramics"

"Creating original pieces by hand is challenging for a photographer despite the pleasures but I found the day inspirational"

"It is already informing my practice"



